

Connections



A publication for the members and friends of Jackson Electric Cooperative ▲ Vol. 27, No. 3

www.jackelec.com

September 2017

Computer Upgrade Coming in 2018

"...will enable staff to handle member inquiries more efficiently, and provide user-friendly bill pay options for members."

Jackson Electric will be upgrading its customer information system in February 2018. This upgrade will enable staff to handle member inquiries more efficiently, and provide user-friendly bill pay options for members.

As we get closer to the "go-live" date, it will be important for you to watch your mail for updates regarding the upgrade. For now, keep watching for information in the December member newsletter, *Wisconsin Energy Cooperative News* monthly magazine, and Jackson Electric's Facebook page.

Support Renewable Energy – Purchase Evergreen

As a member of Jackson Electric, you can support renewable energy by purchasing a block of energy for \$1 through the Evergreen Program. This is a voluntary renewable energy program for those

who want to support renewable energy and are willing to contribute to the costs associated with its production.

By subscribing to Evergreen, you are volunteering to pay a small amount each month, in addition to your monthly electric bill. Your investment will offset the added cost it takes to support renewable energy generation.

If you currently are a subscriber to Evergreen, you can purchase more at \$1 per block. To purchase more blocks or if you're new to purchasing Evergreen, use the form here or download the form at www.jackelec.com.



Please sign me up for Evergreen so I can support renewable energy!

- 1 block (\$1 per month)
- 2 blocks (\$2 per month)
- 3 blocks (\$3 per month)
- 4 blocks (\$4 per month)
- 5 blocks (\$5 per month)
- ___ blocks at \$1 per block per month

* One block = 100 kilowatt-hours

I understand that this amount is in addition to my monthly energy bill and that I may cancel my purchase at any time.

Name: _____

Address: _____

City: _____

State: _____ Zip: _____

Phone: _____

Account No.: _____

Complete and return to Jackson Electric Cooperative.
P.O. Box 546, Black River Falls, WI 54615

Choosing the Correct Bulb

Today, there are many lighting options available. The right bulb for you depends on how much light you need, what color light you want, and its costs and features.

Focus on brightness. Different amounts of light are needed for different uses. Instead of thinking about light bulbs based solely on the amount of energy they use, focus on their brightness level.

Lumen is the measurement of brightness. Higher lumen bulbs produce brighter light. **Watt (W)** is the measure of power consumption.

If you like your bulb's current brightness, choose a CFL or LED with similar lumens to reduce your energy use. You may also consider a bulb that is less bright to save more.



Brightness	Incandescent	CFL	LED
450 lumens	40W	9-13W	4-8W
800 lumens	60W	13-16W	8-13W
1100 lumens	75W	17-23W	11-15W
1600 lumens	100W	23-28W	16-20W

← Least Efficient Most Efficient →

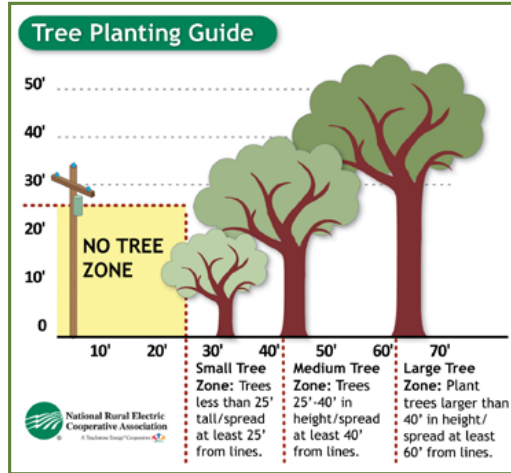
Lumen output listed on packages may vary. Light bulbs listing anywhere from 800 to 860 lumens are similarly bright, for instance.

Plant the Right Tree in the Right Place



Trees beautify our neighborhoods, and when planted in the right spot, can even help lower energy bills. But the wrong tree in the wrong place can be a hazard... especially to

power lines. Avoid planting within 20 feet of power lines. Remember, before putting that shovel in the ground, contact Digger's Hotline at 8-1-1.



Large Trees (height/spread of more than 40 feet): Maple, oak, spruce, pine, birch, sweetgum, and linden

Medium Trees (height/spread of 25 to 40 feet): Washington hawthorn, Golden raintree, Eastern redbud, American arborvitae, dogwoods

Small Trees (height/spread of no more than 25 feet): Star magnolia, crabapple, lilac

Frost Charges

If you plan to have Jackson Electric install electric service on your property after November 1, an additional charge may be applied if the conventional method of electric service installation is not feasible due to frost.

If you're planning to build a structure during the winter season and will need electric service, please contact Jackson Electric now so that any line builds can be arranged.

Planning a New Build?

If you're planning to build a house, shed, or livestock facility and need electric service installed, please contact Jackson Electric Cooperative to schedule an appointment to discuss your electric service needs. We can also help with electric heating and cooling options, water heating, and Energy Star rebates for residential, business, and agricultural.

Capital Credit Allocation

Soon you will be receiving your capital credit allocation notice in the mail. This notice shows the amount earned and credited to your capital credit account for the year stated on this notice. This is notification of your allocated capital credit amount in the cooperative, not a capital credit retirement check.

Some members may receive a capital credit retirement check in December. Annually, the board of directors decides the amount and years to retire based on the financial needs of the cooperative.

A Beautiful Day for a Picnic



Members enjoyed the perfect weather at the picnic.



Future cooperative leaders.



Fellowship is contagious at the annual picnic.

Jackson Electric employees and directors served 600 people at its annual member picnic in the park on August 15. Those in attendance enjoyed pulled pork sandwiches with the traditional picnic sides.

Members winning the 1/8 of processed beef were:

- Leslie Rhoades.....Black River Falls
- Wayne EdwardsMerrillan
- Rodney BlazekBlack River Falls
- Dan Olson.....Sparta
- Natricia Tempski.....Alma Center
- Larry Larson.....Melrose
- Arliss Bruley.....Black River Falls
- Clarice Rush.....Black River Falls

Connections

Connections newsletter is published for members and friends of Jackson Electric Cooperative. Questions or comments should be directed to Carol Blaken, Editor, at:

Jackson Electric Cooperative
P.O. Box 546

Black River Falls, WI 54615

Phone: 715.284.5385 or 800.370.4607

Outage Only Number:
855.222.DARK (3275)

Your comments and suggestions are welcome.



Your Touchstone Energy® Cooperative

Jackson Electric Cooperative is an equal opportunity provider and employer.

Check us out on Facebook, Twitter, Instagram, and YouTube.

